



(Incorporated in the Cayman Islands with limited liability)
Website: <http://www.fecil.com.hk>
(Stock code : 35.HK)

FEC Launches Two Brand-New UK Residential Projects

Aspen at Consort Place in Canary Wharf, London and New Cross Central in Manchester

(19 March, 2020 - Hong Kong) **Far East Consortium International Limited** (“FEC” or the “Group”) is delighted to announce its upcoming launch of Aspen at Consort Place in Canary Wharf, London and New Cross Central in Manchester on 20 March 2020.

Aspen at Consort Place is located in Canary Wharf, one of the major business and transportation hubs in London. It is a prime financial centre in London with well-known international banks and financial corporations including HSBC, JP Morgan and Morgan Stanley. Aspen at Consort Place is anticipated to be the 3rd tallest residential development in Canary Wharf once completed in 2023, giving residents astonishing views of the River Thames. The project provides a range of studios, one, two and three-bedroom apartments, and penthouses within the 65-storey tower and link to 231-room Dorsett hotel. There will be a wide variety of restaurants, bars, cafés, parks and recreational spaces in the district.

New Cross Central is located at the centre of an up -and-coming exciting neighbourhood of Manchester, NOMA & Northern Quarter and within close proximity to Victoria Railway Station and Piccadilly Gardens Skytrain Station. New Cross Central is inspired by the history and character of Manchester. The building’s exterior is model of robust red bricks paying homage to the iconic and historical buildings around the city. Inside, there will be exposed concrete walls that are influenced by the raw beauty of industrial Manchester. The project will provide 80 units for sale, comprising one and two-bedroom apartments and three-bedroom townhouses with terraces.

Mr. Chris HOONG, Managing Director of FEC said: “We are excited to launch two UK residential projects, namely Aspen at Consort Place in Canary Wharf, London and New Cross Central in Manchester. We believe that the demand for quality housing and amenities in London and Manchester is very strong due to the growing populations of these dynamic cities. FEC will continue to provide

quality housing and amenities, creating active and positive new communities. Lower interest rate and lower exchange rate provide a good opportunity to invest in the United Kingdom. Looking ahead, FEC will continue to pursue the ‘Asian Wallet’ diversification strategy to identify market opportunities and create value for our stakeholders.”

The launch of Aspen at Consort Place and New Cross Central will be held at The Sheraton Hotel in Tsim Sha Tsui this weekend. Details as follow:

Date: 20 – 22 March 2020 (Friday - Sunday)

Time: 11 a.m. to 7 p.m.

Venue: Sung Room, 4/F, The Sheraton Hotel, Tsim Sha Tsui



Photo Caption: FEC – Aspen at Consort Place in Canary Wharf, London

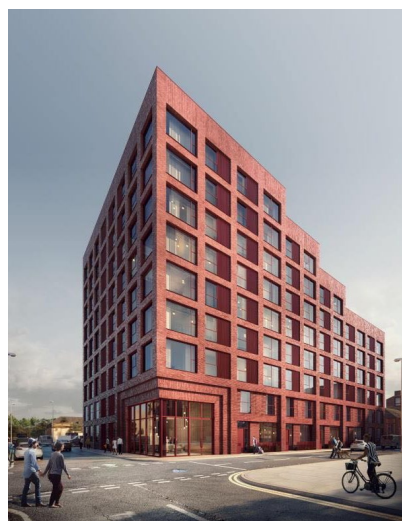


Photo Caption: FEC – New Cross Central in Manchester

-End-

About Far East Consortium International Limited

Far East Consortium International Limited has been listed on the Hong Kong Stock Exchange since 1972 (HKEx stock code: 35.HK). The Group is mainly engaged in property development and investment, hotel development and management, car park operations and facilities management, securities and financial product investment and gaming operations. The Group adopts the diversified regional strategy and the “Asian Wallet” strategy with business covering Hong Kong, Mainland China, Australia, New Zealand, Malaysia, Singapore, the United Kingdom and other European countries.

FEC official website: www.fecil.com.hk

FEC WeChat and Weibo:

<http://www.weibo.com/u/5703712831>



For further information, please contact:

Far East Consortium International Limited

Investor relations enquiries:

Mr. Boswell Cheung / Ms. Beatrice Wong

Contact Number: (852) 2850 0618 / (852) 2850 0635

Email: boswell.cheung@fecil.com.hk / beatrice.wong@fecil.com.hk

Media enquiries:

Ms. Kat Chow

Contact Number: (852) 2850 0625

Email: kat.chow@fecil.com.hk

Wonderful Sky Financial Group

Ms. Ada Ding / Ms. Sherry JIN

Contact Number: (852) 3641 2255 / (852) 3641 1305

Email: fecil@wsfg.hk